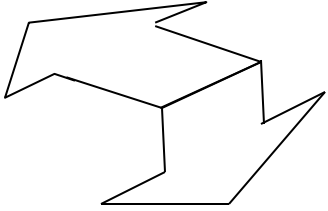


Paired foramina of the pelvis

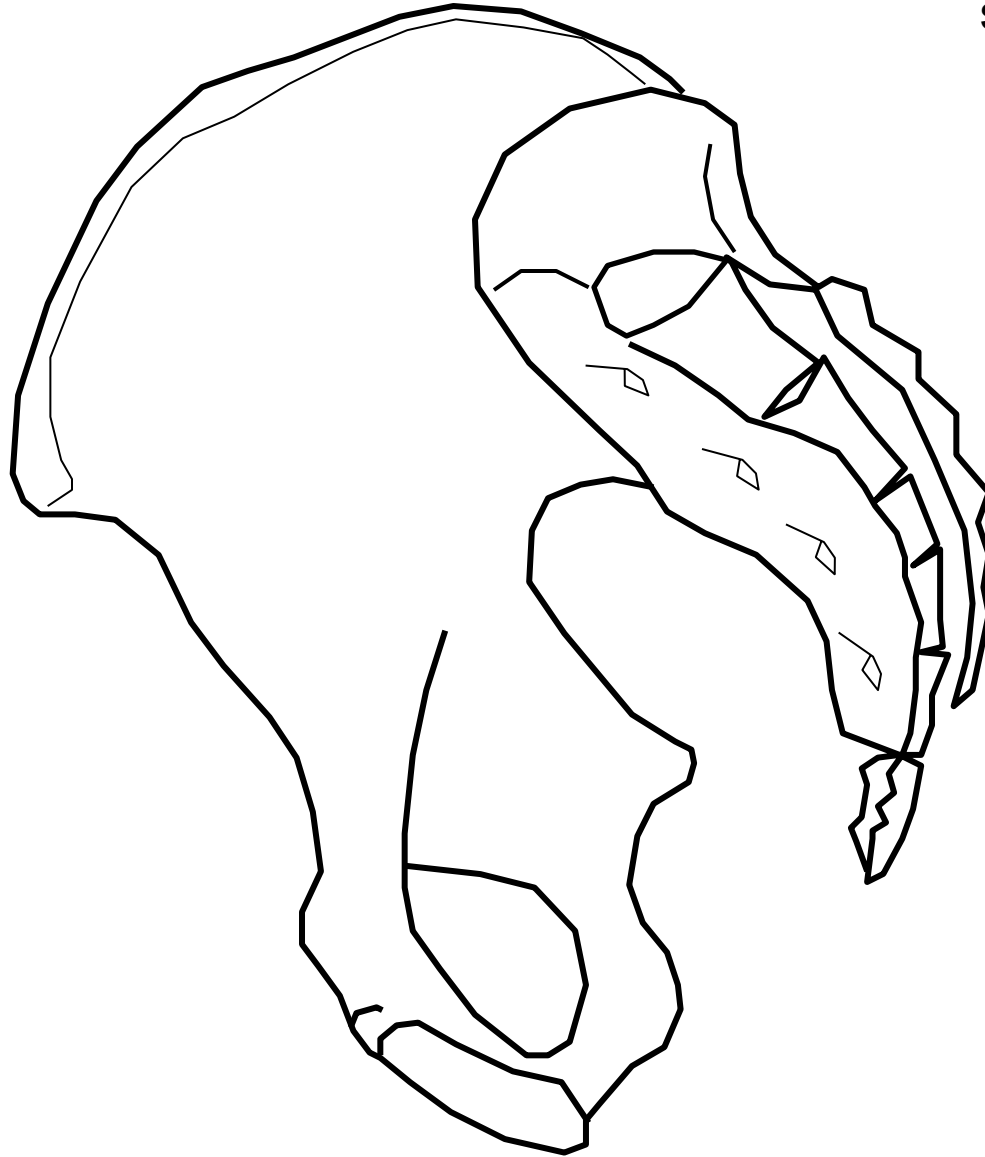
Matt Wedel

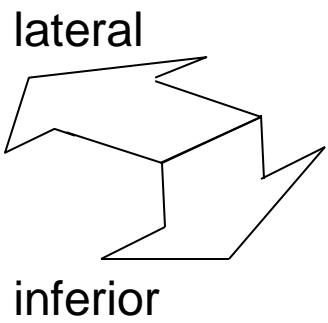
lateral



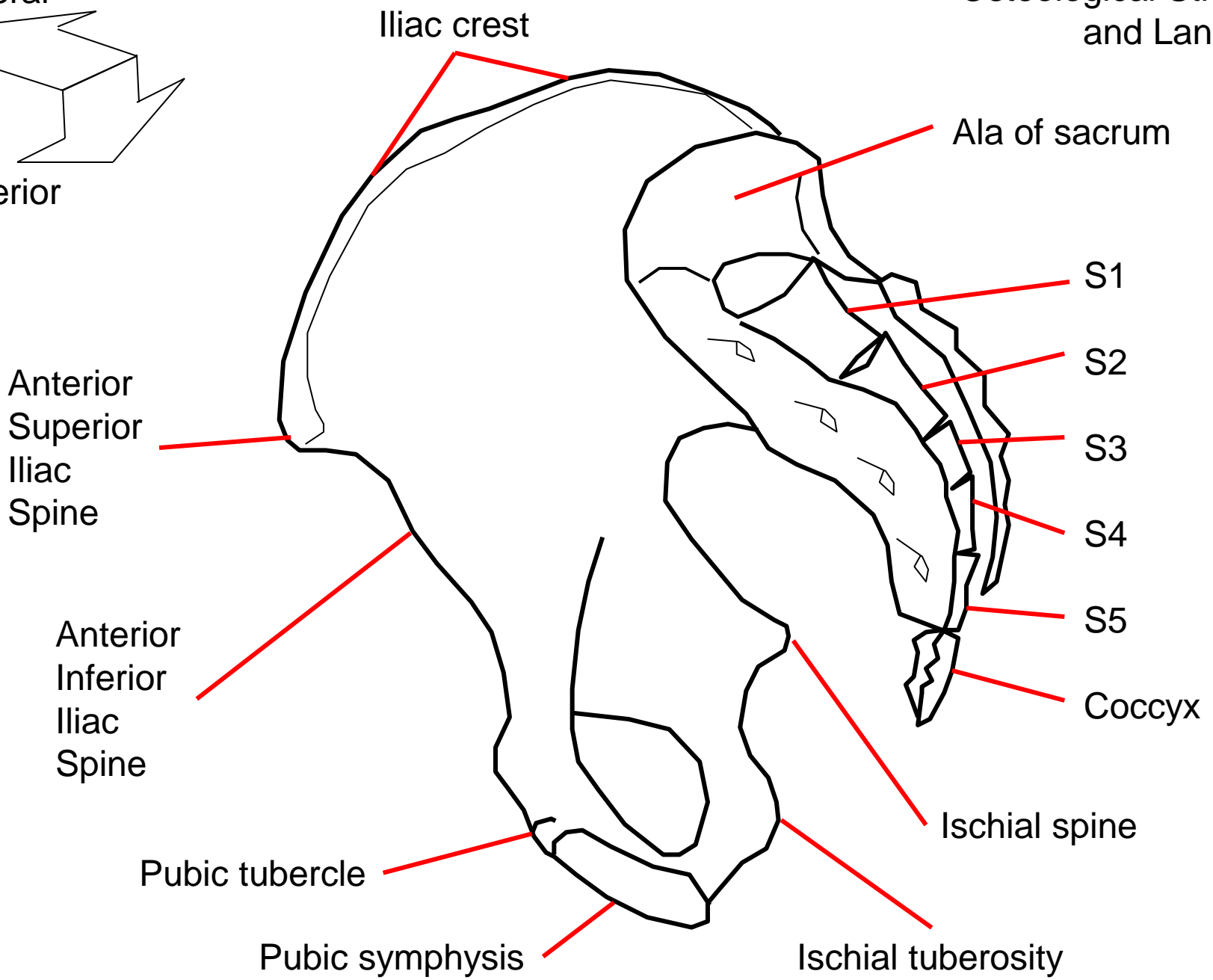
inferior

Right innominate (os coxa)
and hemisected sacrum in
superior-medial view.





Osteological Structures and Landmarks



Iliac crest

Ala of sacrum

S1

S2

S3

S4

S5

Coccyx

Ischial spine

Ischial tuberosity

Pubic symphysis

Pubic tubercle

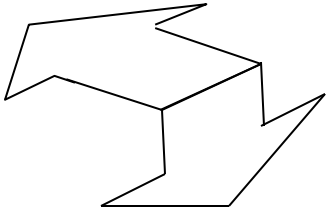
Anterior Inferior Iliac Spine

Anterior Superior Iliac Spine

lateral

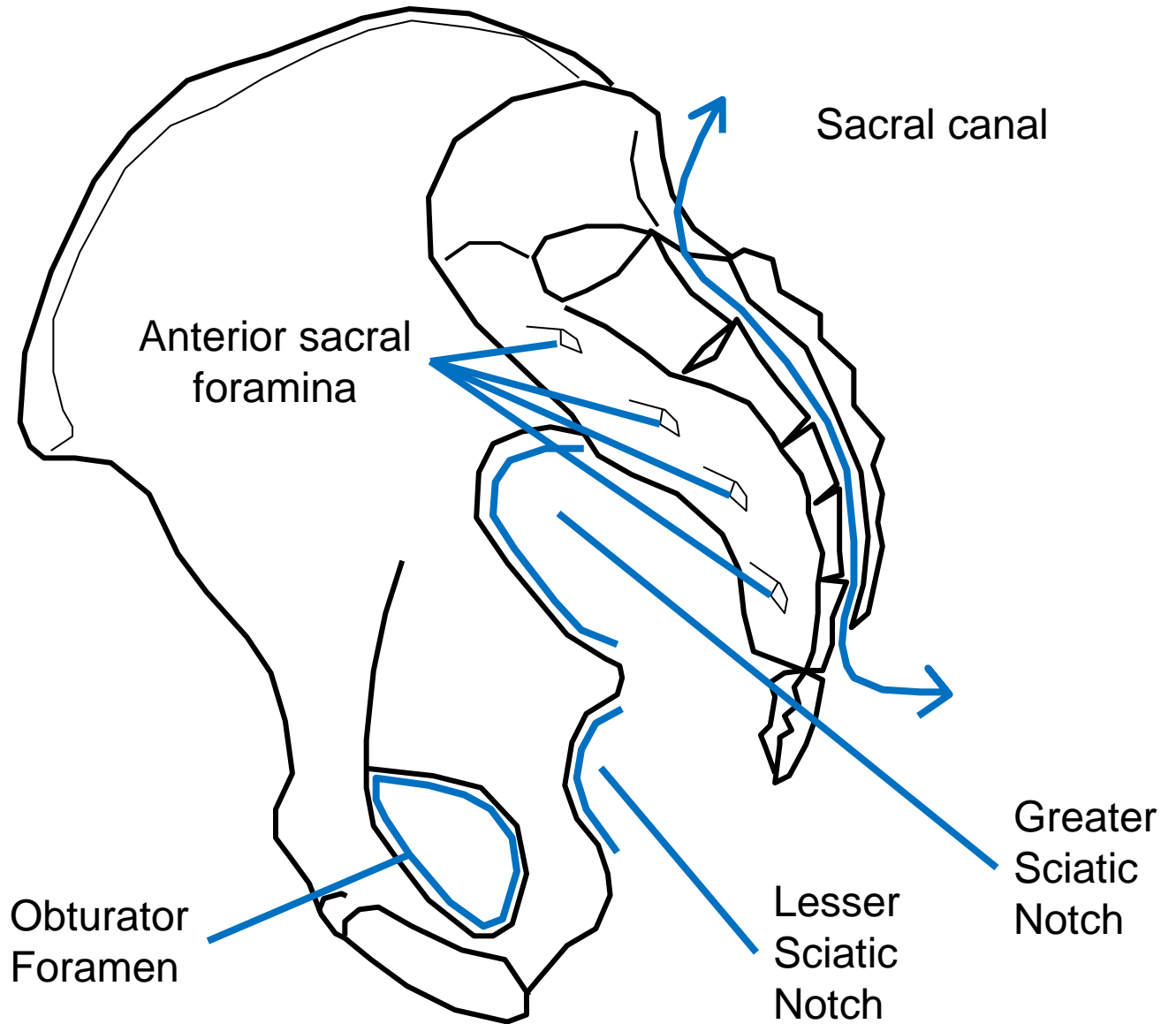
inferior

lateral

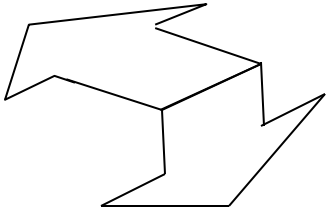


inferior

Notches and
Foramina

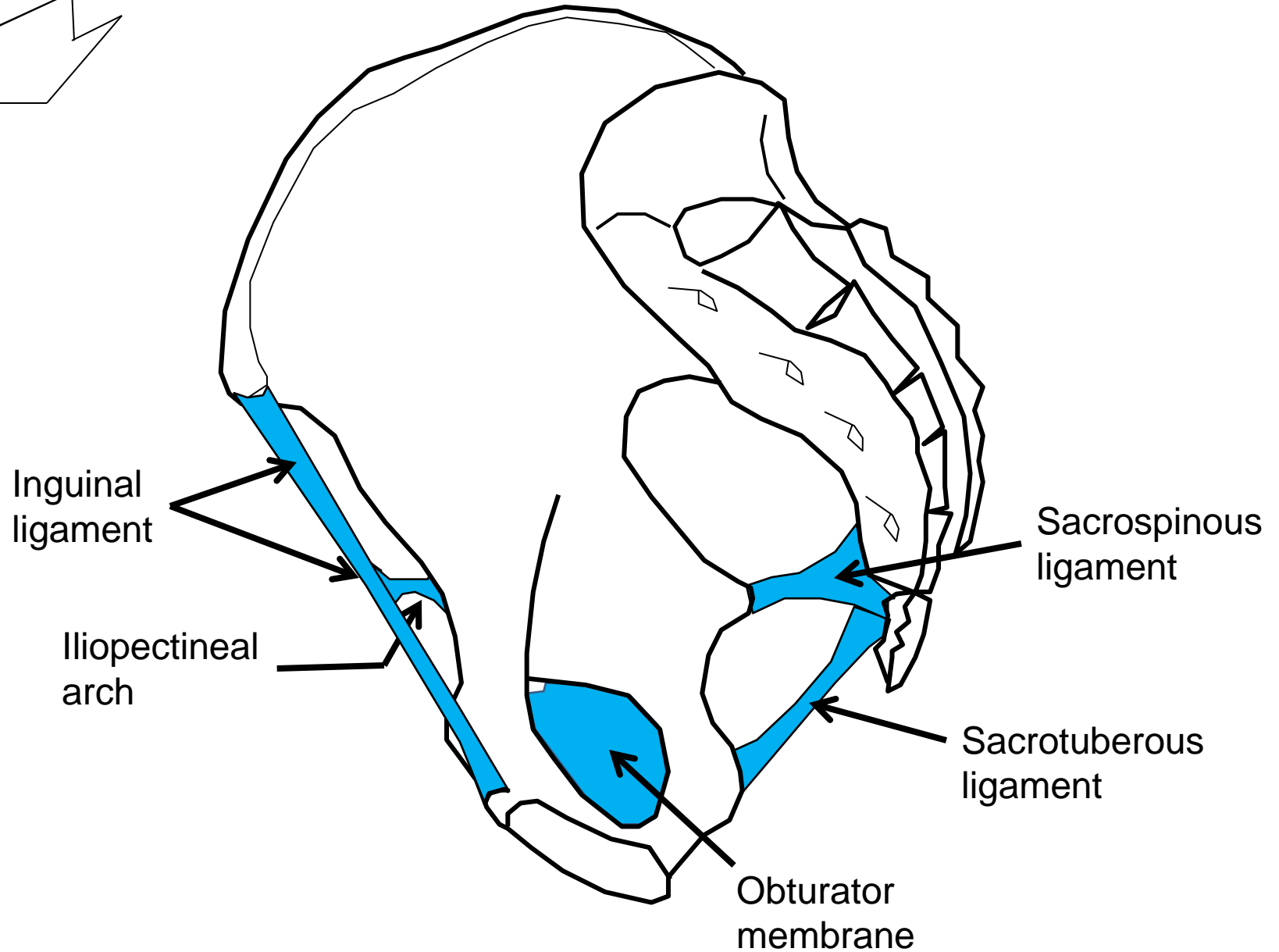


lateral

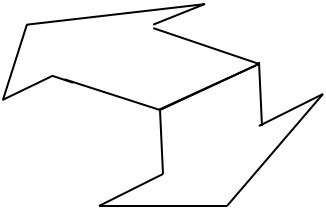


inferior

Ligaments Defining Spaces

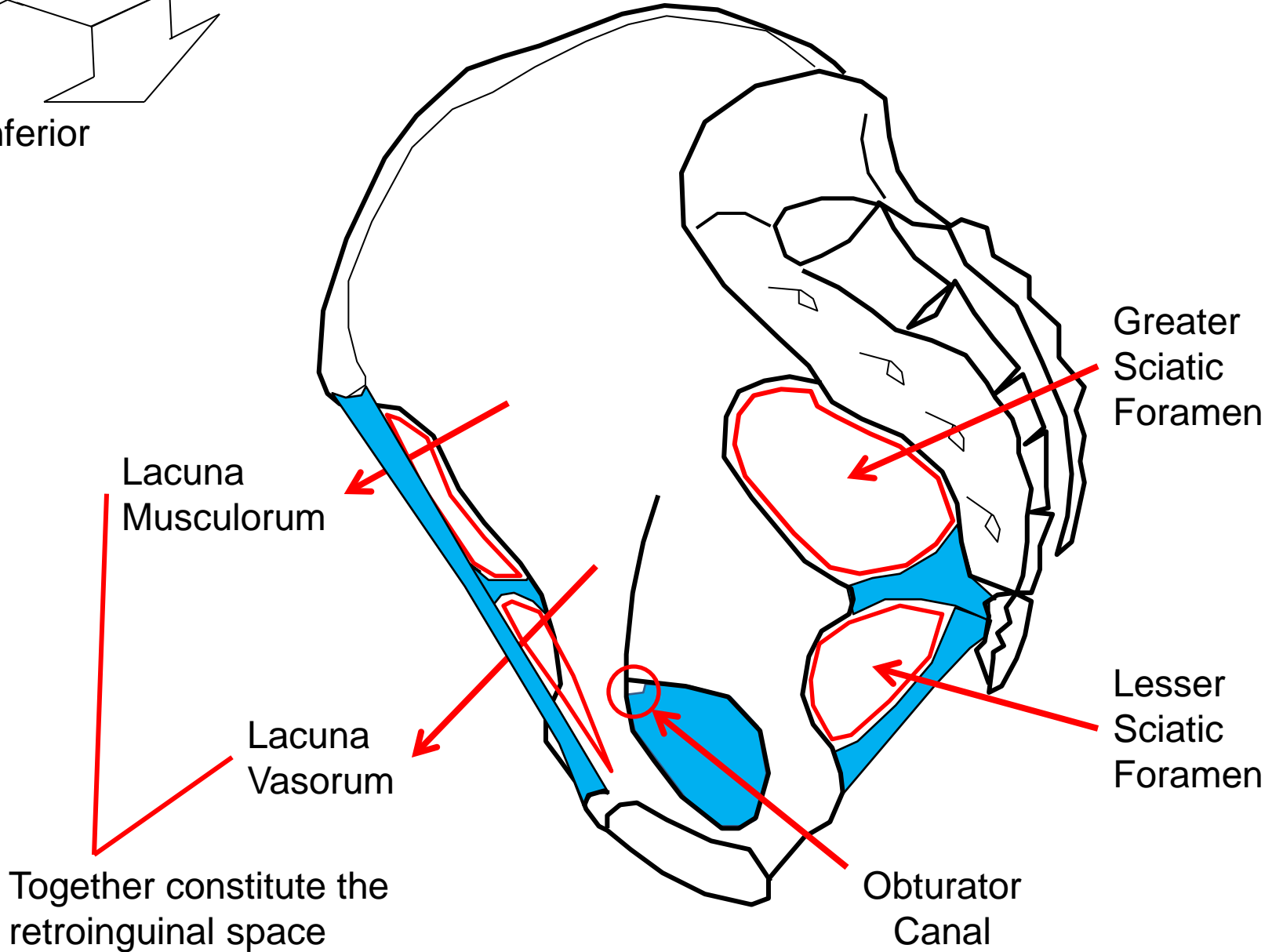


lateral

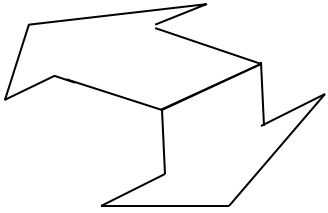


inferior

Newly Defined
Spaces

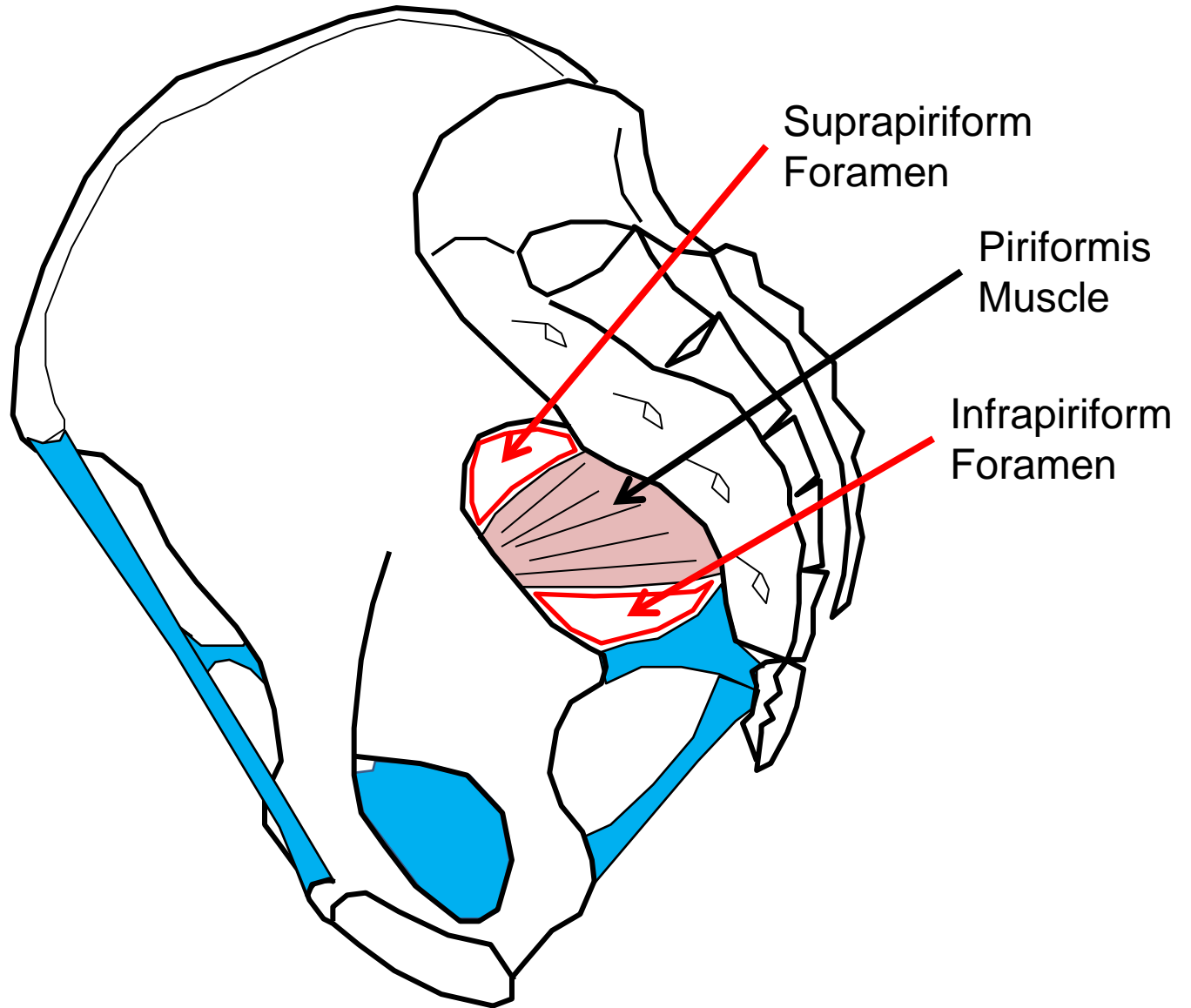


lateral



inferior

Further Division
of Spaces

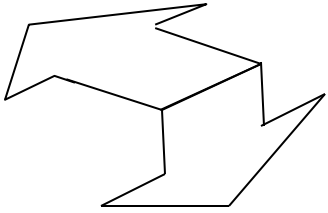


Suprapiriform
Foramen

Piriformis
Muscle

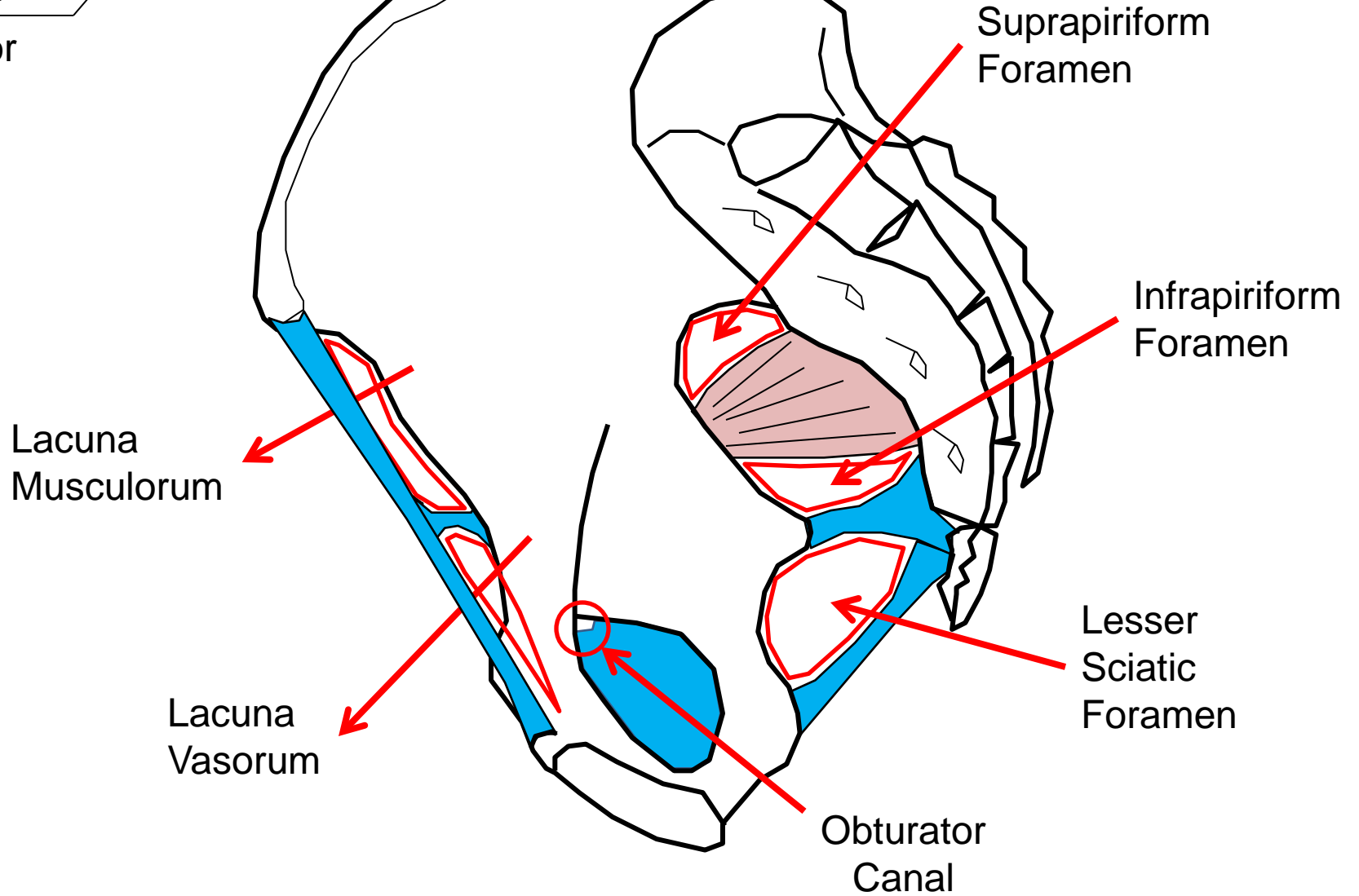
Infrapiriform
Foramen

lateral



inferior

Six paired foramina defined by bones, ligaments, and muscles



Suprapiriform Foramen

Infrapiriform Foramen

Lesser Sciatic Foramen

Obturator Canal

Lacuna Musculorum

Lacuna Vasorum