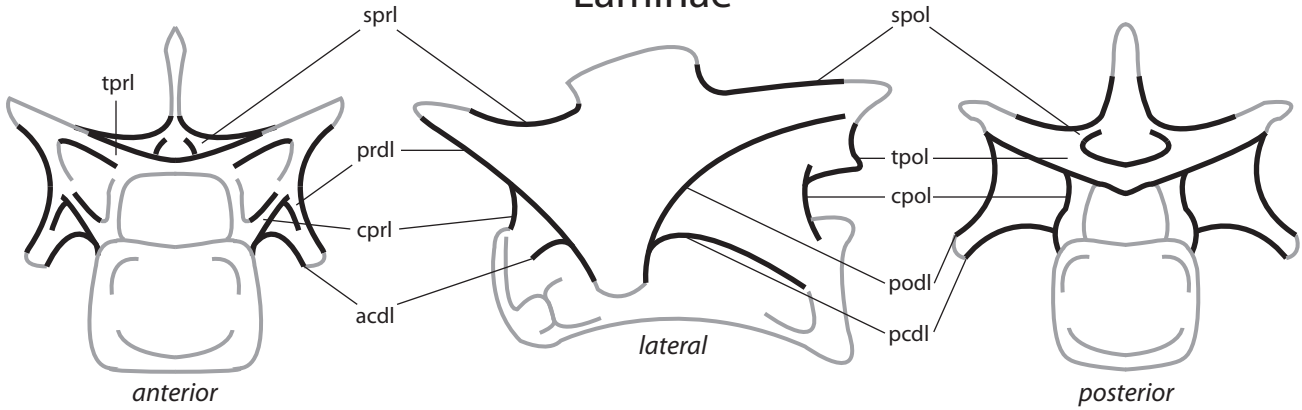
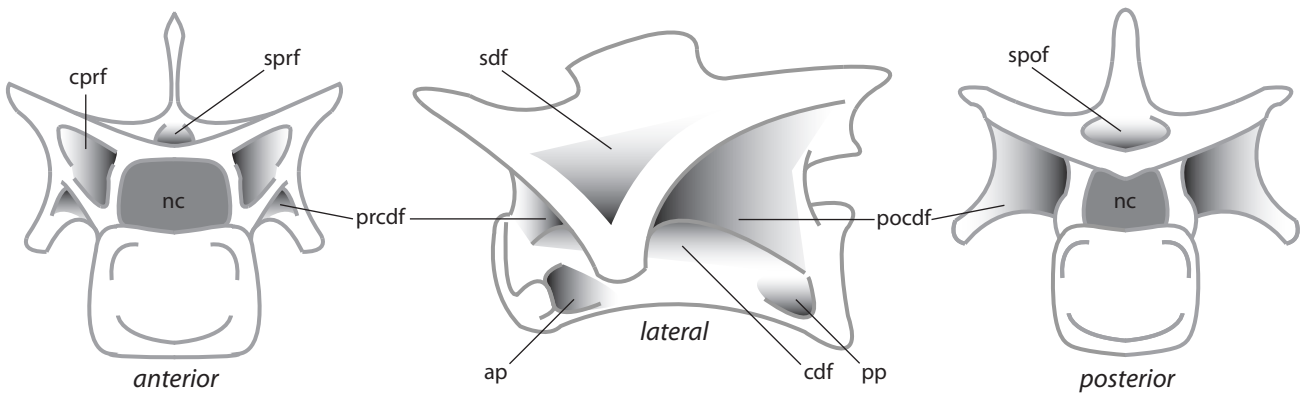


## Laminae



- |                              |                                      |                                 |                                |                                |
|------------------------------|--------------------------------------|---------------------------------|--------------------------------|--------------------------------|
| prdl<br>prezygodiapophyseal  | acdl<br>anterior centrodiapophyseal  | cpri<br>centroprezygapophyseal  | sprl<br>spinoprezygapophyseal  | tprl<br>intraprezygapophyseal  |
| podl<br>postzygodiapophyseal | pcdl<br>posterior centrodiapophyseal | cpol<br>centropostzygapophyseal | spol<br>spinopostzygapophyseal | tpol<br>intrapostzygapophyseal |

## Fossae



- |                            |                                    |                                |                          |                                |
|----------------------------|------------------------------------|--------------------------------|--------------------------|--------------------------------|
| ap<br>anterior pleurocoel  | prcdf<br>prezygocentrodiaophyseal  | sprf<br>spinoprezygapophyseal  | sdf<br>spinodiapophyseal | cprf<br>centroprezygapophyseal |
| pp<br>posterior pleurocoel | pocdf<br>postzygocentrodiaophyseal | spof<br>spinopostzygapophyseal | cdf<br>centrodiaophyseal | nc<br>neural canal             |

## Saurischian vertebral laminae and fossae

Generalized anterior cervical vertebra of *Dilophosaurus wetherilli*  
after Wilson, 1999; Wilson et al., 2011